

INSTALLATION INSTRUCTIONS FOR CUSTOM ROMAN SHADE with Cord Control

Mounting hardware kit includes the following:

Part	Quantity	Part	Quantity
a. Mounting Brackets	2 (shades up to 36" wide) 3 (shades 36" to 48" wide) 4 (shades 48" to 96" wide) 5 (shades 96" to 120" wide)	c. 3/4" Screws	2 (shades up to 36" wide) 3 (shades 36" to 48" wide) 4 (shades 48" to 96" wide) 5 (shades 96" to 120" wide)

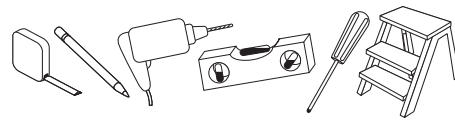
Note: brackets are for Outside Mount installations only!

b. 1-1/4" Screws	2 (shades up to 36" wide) 3 (shades 36" to 48" wide) 4 (shades 48" to 96" wide) 5 (shades 96" to 120" wide)
------------------	--

Note: 3/4" screws are for Outside Mount installations only!

Tools Required:

Pencil, tape measure, level, screw driver, step stool, drill.



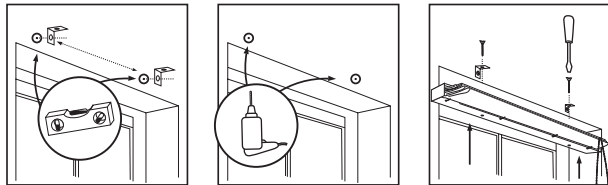
Installation:

Wallboard or Plaster: use anchors specifically designed for hollow walls (not included).

Concrete, Stone, Brick: use a masonry drill bit and anchors or screws specifically designed for masonry (not included).

For Outside Mounting

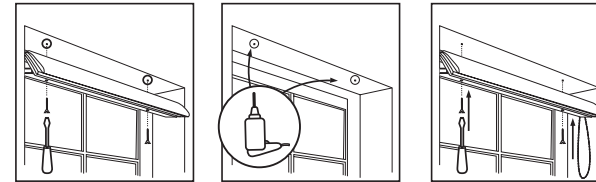
One bracket should be positioned about 2" to 6" from each end of the head rail. For wider shades that require 3 or more brackets, these should be spaced evenly between the two outermost brackets. Hold the shade in place and mark the desired bracket locations with a pencil. The brackets must be level – use a Spirit Level if necessary to assure proper alignment. The brackets will be attached to the top of the head rail, so attach the brackets to the wall or window frame first. Pre-drill the mounting holes using a 5/64" drill bit, then screw the brackets in place. Place the head rail against the brackets as illustrated – center the shade over the window opening – then mark the location of each mounting hole on the head rail. Pierce the fabric at the hole locations using the tip of a screw, then pre-drill the mounting holes using a 5/64" drill bit. Attach the shade to the brackets using the 3/4" screws provided.



For Inside Mounting:

Mounting holes are pre-drilled in the Head Rail. Screw the 1-1/4" screws into the head rail until the tips of the screws extend very slightly beyond the top of the head rail. Align the front of the shade with the front edge of the window opening (or position as desired), making sure that the shade is centered in the window opening – then push up on the head rail so that the screw heads leave tiny impressions in the top of the window frame.

Now, use the impressions as a guide and pre-drill the mounting holes using a 5/64" drill bit – then screw the shade in place.



Attach Cord Guide

The cord guide is pre-attached to the cord and must be attached to the wall or window frame using the screws provided.

How to Operate

To raise or lower the shade, pull the lift cord.

Cleaning

To clean the shade fabric, use a feather duster or vacuum lightly using the soft brush or upholstery attachment. For more extensive cleaning, please locate a professional drapery cleaning service.

LIMITED LIFETIME WARRANTY

Lifetime: Entire product against manufacturing defects (i.e. a flaw in the product design, materials or workmanship that causes the product to no longer function)

5 Years: All fabric

Not Covered:

Normal Wear and Tear

Any product that fails due to:

- abuse • exposure to salt air • improper installation • accident • extraordinary use • improper operation • alteration • improper cleaning • misapplication • damage from pests/insects/pets • improper handling • misuse

Costs associated with:

- product removal • transportation to and from the retailer • brand label removal • product re-measure • incidental or consequential damages • product reinstallation • shipping

To Report Shipping Damage

If damage occurred during shipping, call place of purchase and report within 7 calendar days or else you may be denied credit for your damaged product.

To Obtain Service

If you suspect that this Phase II product has a manufacturing defect in materials or workmanship:

1. Locate the sales receipt
 2. Call place of purchase
- Any unauthorized returns will not be accepted.

Warranty Remedy

THIS SHALL BE YOUR SOUL REMEDY UNDER THIS LIMITED WARRANTY.

If this product is found to have a manufacturing defect in materials or workmanship, we will, at our discretion, do one of the following:

- repair the product • replace the product • refund the cost of the product

Color

Colors vary from lot to lot and may not exactly match sample swatches or previous purchases.

Discontinued items or color selections will be replaced with the closest equivalent current product.

YOUR RIGHTS UNDER STATE LAW

This lifetime limited warranty gives you specific legal rights, and you may have other rights, which vary from state to state. Some states do not allow limitations on how long a warranty lasts, so the above limitations may not apply to you.

No agent, representative, dealer or unauthorized employee has the authority to increase or alter the obligation of this warranty. This lifetime limited warranty supersedes any previous versions.

PHASE II PRODUCTS, INC.

501 WEST BROADWAY, SUITE 1350 • SAN DIEGO, CALIFORNIA 92101 • 1-800-264-1190