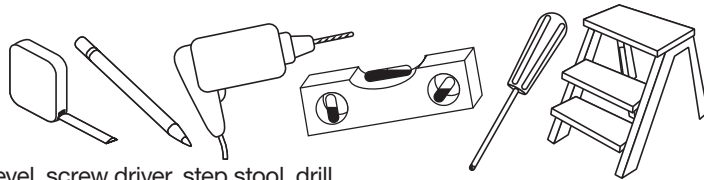


# INSTALLATION INSTRUCTIONS FOR CUSTOM ROMAN SHADE

## Mounting hardware kit includes the following:

Part	Quantity	Part	Quantity
a. Mounting Brackets	2 (shades up to 36" wide) 3 (shades 36" to 48" wide) 4 (shades 48" to 96" wide)	c. 3/4" Screws	2 (shades up to 36" wide) 3 (shades 36" to 48" wide) 4 (shades 48" to 96" wide)
<b>Note: brackets are for Outside Mount installations only!</b>		<b>Note: 3/4" screws are for Outside Mount installations only!</b>	
b. 1-1/4" Screws	2 (shades up to 36" wide) 3 (shades 36" to 48" wide) 4 (shades 48" to 96" wide)		

## Tools Required:



Pencil, tape measure, level, screw driver, step stool, drill.

## Installation:

Wallboard or Plaster: use anchors specifically designed for hollow walls (not included).  
Concrete, Stone, Brick: use a masonry drill bit and anchors or screws specifically designed for masonry (not included).

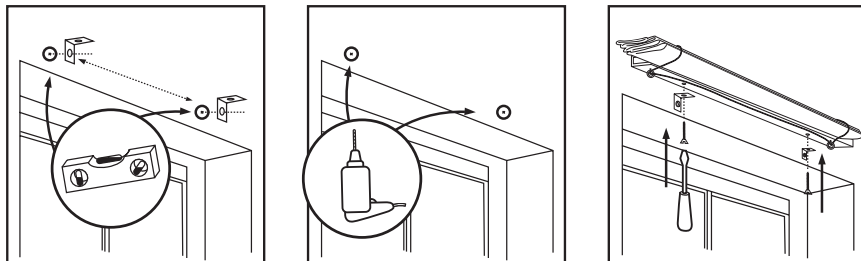
## For Outside Mounting

One bracket should be positioned about 2" to 6" from each end of the head rail. For wider shades that require 3 or 4 brackets, these should be spaced evenly between the two outermost brackets. The brackets must not interfere with the cord guides or cord lock or in any way impede the movement of the lift cords – therefore, we recommend that you hold the shade in place and mark the desired bracket locations with a pencil.

The brackets must be level – use a Spirit Level if necessary to assure proper alignment.

Pre-drill the mounting holes using a 5/64" drill bit, then screw the brackets in place.

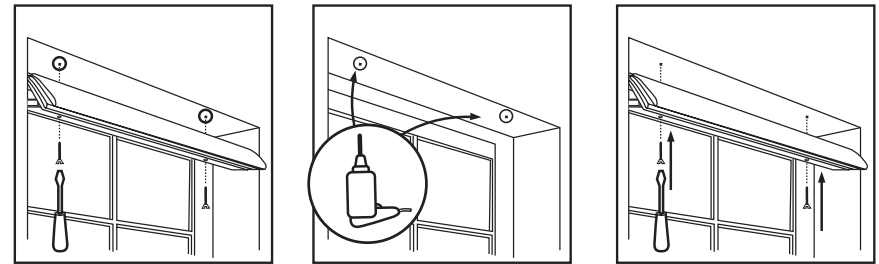
Place the head rail on top of the brackets – center the shade over the window opening – then mark the location of each mounting hole on the head rail. Pierce the fabric at the hole locations using the tip of a screw, then pre-drill the mounting holes using a 5/64" drill bit. Attach the shade to the brackets using the 3/4" screws provided.



## For Inside Mounting:

Mounting holes are pre-drilled in the Head Rail. Screw the 1-1/4" screws into the head rail until the tips of the screws extend very slightly beyond the top of the head rail. Align the front of the shade with the front edge of the window opening (or position as desired), making sure that the shade is centered in the window opening – then push up on the head rail so that the screw heads leave tiny impressions in the top of the window frame.

Now, use the impressions as a guide and pre-drill the mounting holes using a 5/64" drill bit – then screw the shade in place.



## How to Operate

To raise or lower the shade, pull the lift cord slightly to release the cord lock. Adjust the shade to the desired height, then move the lift cords slightly toward the outside of the shade to lock in place.

## Cleaning

To clean the shade fabric, use a feather duster or vacuum lightly using the soft brush or upholstery attachment. For more extensive cleaning, please locate a professional drapery cleaning service.

## ONE YEAR LIMITED WARRANTY

**1.** What is warranted and for how long: For a period of one (1) year from the date of purchase, Phase II will replace this window covering with a new window covering of equal or superior value, if this windows covering is found to be defective in material or workmanship.

**2.** What is not covered in this warranty: This warranty does not cover removal or installation or reinstallation of any window covering.

This warranty does not cover damage or defects caused by or resulting from improper maintenance, negligent or improper use, abuse, misuse, neglect, accidents, acts of God, alteration, commercial use, installation, removal or reinstallation.

This warranty is restricted to normal consumer use within the United States.

**PHASE II WILL NOT BE LIABLE FOR INCIDENTAL OR CONSEQUENTIAL DAMAGES. SOME STATES DO NOT ALLOW THE EXCLUSION OR LIMITATION OF INCIDENTAL OR CONSEQUENTIAL DAMAGES, SO THE ABOVE LIMITATION OR EXCLUSION MAY NOT APPLY TO YOU.**

**PHASE II PRODUCTS, INC.**

501 WEST BROADWAY, SUITE 1350 • SAN DIEGO, CALIFORNIA 92101 • 1-800-264-1190